

Prelude

David Joseph Stith

Flute

5

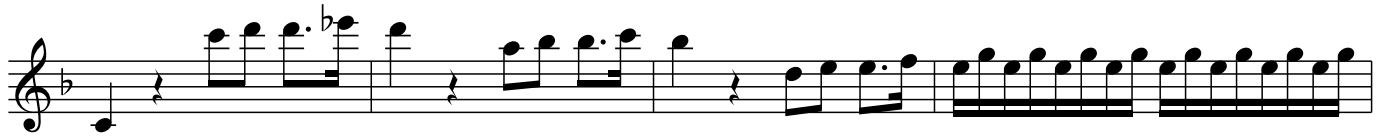
4

4

4

3 3

3 3



Fugue

David Joseph Stith

Flute

The musical score for 'Fugue' by David Joseph Stith is presented for the Flute. It is written in 4/4 time and features a key signature of one flat (B-flat). The score consists of 11 staves of music. The first staff begins with a treble clef, a key signature of one flat, and a 4/4 time signature. The music features a complex fugue structure with multiple voices, including a prominent melodic line and a dense, rhythmic accompaniment. The score includes various musical notations such as eighth and sixteenth notes, rests, and dynamic markings like 'p' (piano) and 'f' (forte). The piece concludes with a final cadence on the eleventh staff.